

8

7

6

5

4

3

2

1

D

C

B

A

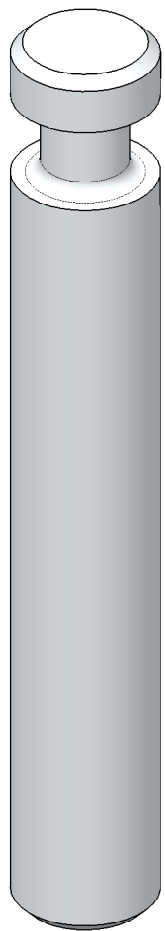
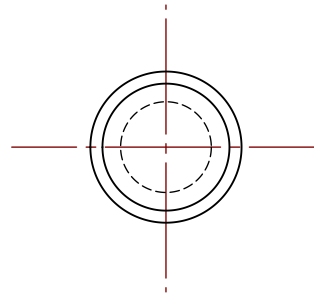
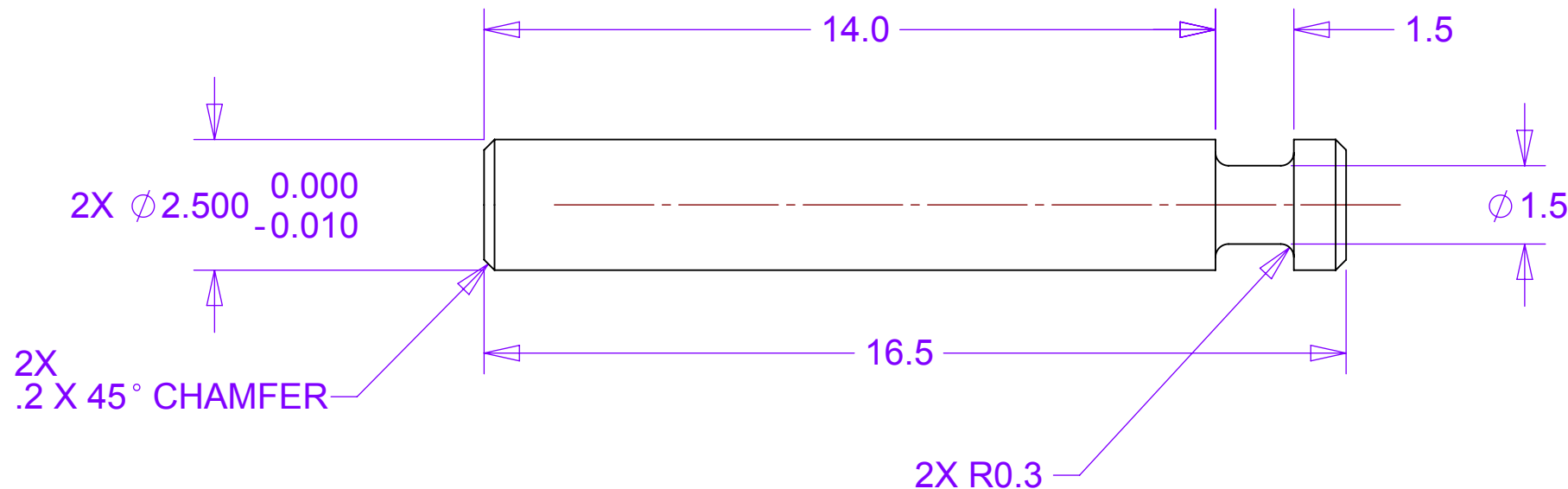
D

C

B

A

REV	REVISIONS	DATE	APPROVED
	DESCRIPTION		

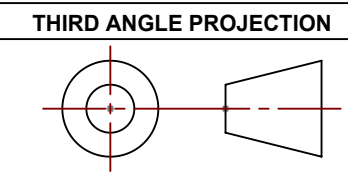


MATERIAL: 316 STAINLESS STEEL

NOTES: UNLESS OTHER WISE SPECIFIED

- 1. ALL DIMENSIONS IN MILLIMETERS
- 2. DIMENSIONS AND TOLERANCING PER ASME Y14.5M-1994
- 3. SURFACE TEXTURE PER ANSI/ASME B 46.1-1985
- 4. REMOVE ALL BURRS AND BREAK SHARP EDGES TO A MAXIMUM OF .4
- 5. ALL INSIDE CORNERS TO BE .4 RADIUS MAX
- 6. COUNTERSINK 82 DEGREES ALL TAPPED HOLES TO MAJOR DIAMETER
- 7. COUNTERSINK 82 DEGREES APPROXIMATELY .08/1.5 DEEP ALL DRILLED HOLES
- 8. PARTS TO BE THOROUGHLY CLEANED TO REMOVE ALL OIL, GREASE, DIRT AND CHIPS
- 9. PART NUMBER (DRAWING NO., DASH NO., REVISION NO., SERIAL NO.) TO BE CLEARLY MARKED ON THE PACKAGING BAG OR PART ITSELF.

THIS DOCUMENT CONTAINS INFORMATION THAT IS THE PROPRIETARY PROPERTY OF HYTEC, INC.  
REPRODUCTION, DISCLOSURE, OR RELEASE TO OTHERS, MANUALLY OR ELECTRONICALLY,  
IS STRICTLY PROHIBITED WITHOUT THE PRIOR WRITTEN CONSENT OF HYTEC, INC.



UNLESS OTHERWISE SPECIFIED: DIMENSIONS ARE IN MILLIMETERS -TOLERANCES-	CAD GENERATED DRAWING, DO NOT MANUALLY UPDATE DO NOT SCALE DRAWING			<b><i>HYTEC, INC</i></b>	
	DECIMALS X = +/- .5 .X = +/- .1 .XX = +/- .01 .XXX = +/- .001	ANGULAR .X = +/- 30° .XX = +/- 15° SURFACE FINISH = 250	FINISH	TITLE <b>PHENIX CENTRAL UPGRADE DISK MOUNTING EXTRACTABLE LOCATING PIN</b>	
PART NO. <b>111-PHX-02-3001-1</b>	Designer	Roger L. Smith	3/9/2010	DWG. NO.	SIZE
	Drawn	Roger L. Smith	3/9/2010	111-PHX-02-3001	D
	Checked	RJ Ponchione	4/12/2010	1 of 1	
	Engineer	RJ Ponchione	3/9/2010	REVISION	
	Approved	Walt Sondheim	4/12/2010	SCALE 8:1	